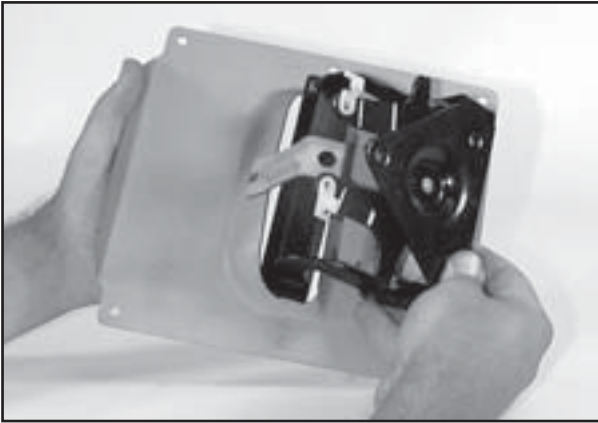


LATCH HANDLE RELOCATOR KIT FOR 88-UP FULL SIZE CHEVY/GMC PICKUPS

This kit changes the tailgate latch handle to operate the tailgate latches from the inside or front face of the tailgate. A cover plate is also included to cover the original handle opening on the outside of the tailgate. The original handle must be mounted to the adapter plate before installation. The tailgate does not need to be removed for this installation. The suggested procedure is as follows.

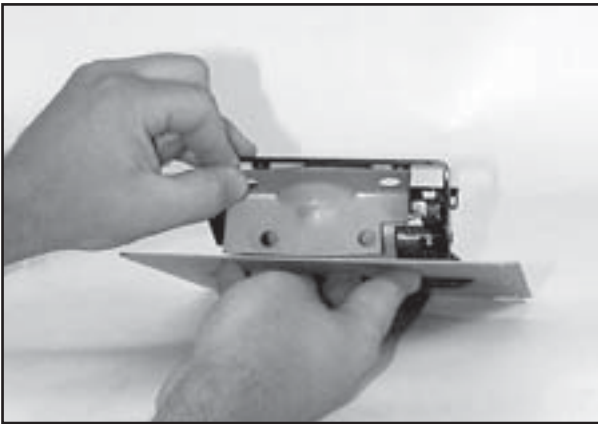
1. Remove the original handle from the tailgate.
2. Assemble the original handle mechanism into the adapter plate as shown in the attached instructions.
3. Mark the centerline of the tailgate at top and bottom on the front face, or inside surface, of the tailgate. Use the paper template as a guide for locating the area to be cut out on the tailgate skin. Align the center line of the template to the tailgate center line as marked above. The top of the cutout area should be 3-5/8" below the top of the tailgate. Hold the paper flat even though the tailgate surface is curved. Secure it with masking tape.
4. Center punch through the paper to mark the four corners of the area to be cut out. Remove the paper template and use a felt marking pen to draw four straight lines connecting the center punched corners of the area to be cut out. This is the area to be cut out for the new handle mechanism. The opening is **6" wide and 4-3/8" tall**.
5. Using a suitable saw, grinder, or perhaps a plasma cutter, cut out the rectangular opening marked in #4 above. The curved surface makes this difficult and a small grinder may be needed to smooth the opening.
6. Lay the assembled adaptor panel with handle over the opening in the position it will be mounted. Check the position of the adaptor panel to see that it is horizontally centered on the embossed pattern of the tailgate. It should fit on the flat area around the opening with the lower bent edge blending to the embossed area on the tailgate. Check that there is clearance around the handle mechanism and that it will operate freely without rubbing the sheet metal. While holding the adaptor panel in its correct position, center punch the tailgate through two screw holes that are diagonally opposite each other in the adapter panel. Use a #24 or 5/32 drill and drill the tailgate.
7. Lay the adapter panel with handle in the opening. The tips of the rods should be visible in the opening near the new handle mechanism. If not, use a wire or needle nose plier to move the rod tips near the handle connectors.
8. Lift the rod tips and insert them into the plastic retainers on the handle mechanism. Snap the retainers over the rods and check that the handle operates the latches correctly. Complete the installation by installing the screws to secure the handle relocator assembly to the tailgate.
9. If the latches operate correctly, the handle relocate kit is completed. The tailgate is ready for welding the cover plate over the original handle opening.



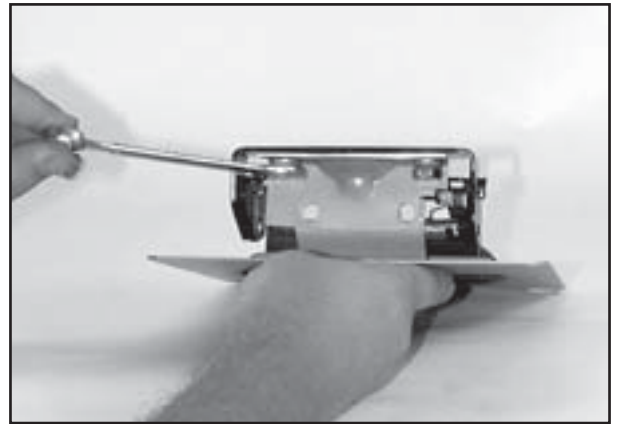
1. Hold the handle in the open position and while holding it open insert it into the opening from the back side. Be careful not to scratch the paint.



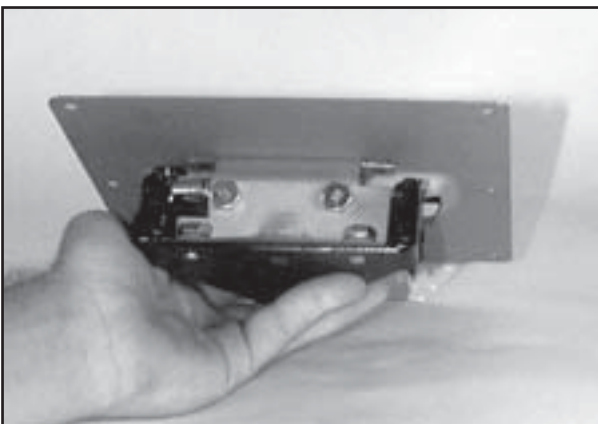
2. Use a cup washer and an 8mm hex head screw to attach the lower mounting point and the handle to the bracket on the adapter plate. Do not tighten the screw at this time.



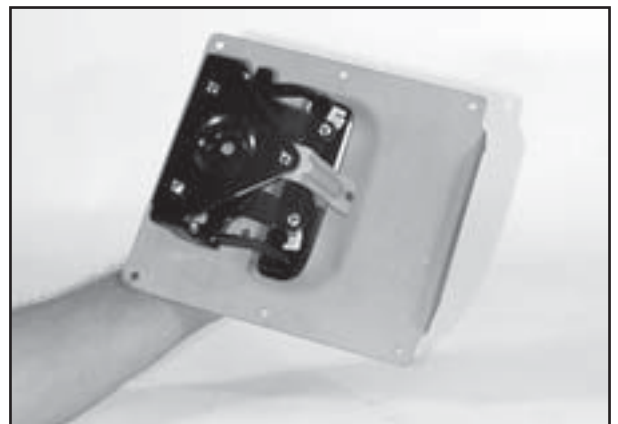
3. Insert the angle bracket between the upper two mounting points and the bracket welded to the adapter plate above the handle opening. The angle bracket should be positioned above the welded bracket.



4. Use the two cup washers and 8mm hex head screws to attach the angle bracket to the upper two handle mounting points. Tighten the screws securely.



5. Attach the angle bracket to the welded bracket above the handle opening using two 8mm hex head screws and nuts. Tighten the bolts slightly to permit aligning the handle.



6. Shift the handle as needed to align it to the adaptor plate opening. When the alignment is correct tighten all bolts. Reverse the plastic clips that hold the latch rods to the handle mechanism. The assembly is ready to install.

This page reserved for tailgate template which is included with the tailgate handle relocater kit.