

REAR PANS FOR 88-98 SPORTSIDE GM FULLSIZE PICKUP WITH EXHAUST OUTLETS

The rear pan fits between the bed sides below the tailgate. It is formed to match the curve of the bed sides so that when installed it fills the open area under the tailgate by carrying the original body lines across the rear of the box. A cutout area is provided for the tailpipe outlets.

SUGGESTED INSTALLATION INSTRUCTIONS

1. Remove the bumper, brackets, and spare tire. Install a spare tire relocater to move the spare tire forward for clearance.
2. Hold the rear pan in position to make sure it fits. While holding the pan in its proper mounting position, mark the rear sill through the holes along the mounting flange of the rear pan. These marks will be used to locate and drill holes for attaching the pan.
3. Remove the tailgate for clearance when drilling the mounting holes
4. Centerpunch and drill for the mounting screw holes as marked in step #3 above. Use a 5/32" drill.
5. Primer the pan and paint it to match the truck. The back side of the pan should also be painted or undercoated to provide rust protection. For best protection the welded seams should be sealed before painting.
- 6a. Early design Sportsides have a hex head bolt about 6" below the tailgate hinges on each side of the bed. If your truck has this bolt, remove it before installing the pan. Longer bolts and spacers are provided to be used to attach the rear pan to the bed side in the same threaded hole. When installing the pan, use a spacer between the pan end panel and the bolt hole with the new bolt passing through the flat washer, end panel, spacer, and into the threaded hole in the bedside.
- 6b. Later design Sportsides do not have the hex bolt noted above. For these trucks a separate mounting bracket is provided to support the pan by bracing it to existing bolts which hold the rear sill to the bed sides. Note that each end of the rear sill has two hex head bolts on the lower edge with the heads facing toward the rear of the truck. Remove the inboard bolt on each side and loosely install the bent end of the mounting bracket with each bolt. Each bracket should extend outward and downward to the rear from its mounting bolt. The hole in the unbent end of the mounting bracket will align with the hole in the rear pan end panel when the pan is mounted in position.
7. Before installing the pan, screw one of the sheet metal screws in and out of each hole drilled in the rear sill to perform the threads. Use a drop of oil on the screw threads. This makes it much easier when attaching the pan.
8. Install the rear pan using the two hex head bolts and the sheet metal screws provided. Make any minor adjustments in pan position and tighten all bolts and screws.
9. The truck is ready for the license lights and the custom exhaust system.

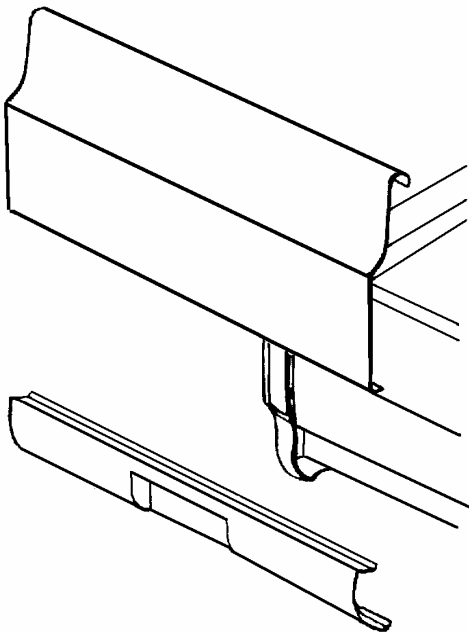
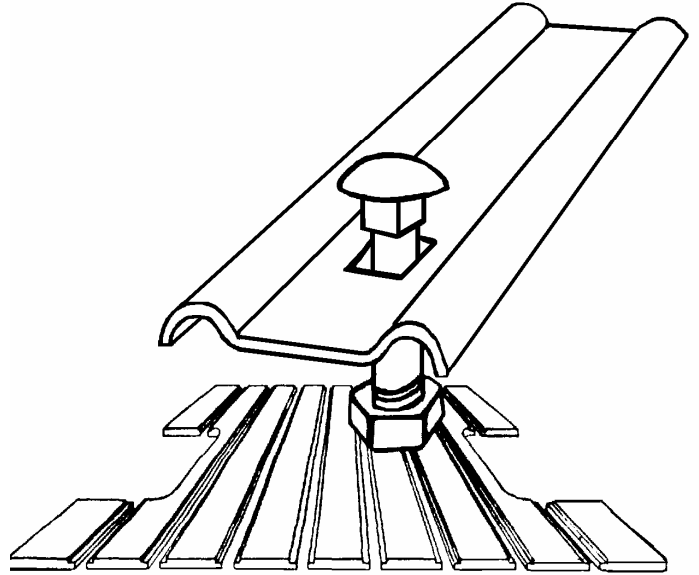
©Copyright 1997 MAR-K Specialized Mfg. All rights reserved.

RESTORATION & CUSTOM PICKUP PARTS

BED STRIPS

BED WOOD

- Bed Sides
- Tailgates
- Cross Sills
- Rear Sills
- Hardware
- Front Bed Panels



REAR PANS FRONT PANS TAILGATE COVERS HANDLE KITS

- Weld on or bolt on panels
- Complete instructions included
- 18 Gage steel
- Smooth or Louvres

**** PARTS AVAILABLE VARY EACH STYLE – CALL FOR MORE INFO****