

REAR PANS WITHOUT A LICENSE TAG BOX
67-72 FLEETSIDE AND 73-87 FLEETSIDE
Suggested Installation Instructions

The rear pan fits between the bed sides below the tailgate. It is formed to match the curve of the bed sides so that when installed it fills the open area under the tailgate by carrying the original body lines across the rear of the box.

1. Remove the bumper and brackets.
2. Hold the rear pan in position under the tailgate to make sure it fits.
3. If necessary, grind the ends slightly so that the pan fits between the bed sides and is even with the finished surface of the bed side below the tailgate.
4. Make sure the tailgate will open without binding against the pan and adjust the position if necessary. The tailgate may need to be adjusted, especially if the trunnions are worn or if a tailgate cover is being used.
5. Tack weld a couple of places on each end, checking the edges, Verify the alignment before completely welding the seam. Weld the pan to the bed sides from the inside.
6. Weld or screw the pan to the rear sill of the bed floor below the tailgate. Minor shims or spacers may be required so the tailgate will still open without binding.
7. Fill the welded seam at the bed sides with bondo or lead. Grind the seam to the body contour.
8. The pan is now ready for paint finishing.

©Copyright 1997 MAR-K Specialized Mfg. All rights reserved.

Another Outstanding Part Manufactured in Oklahoma City, USA by

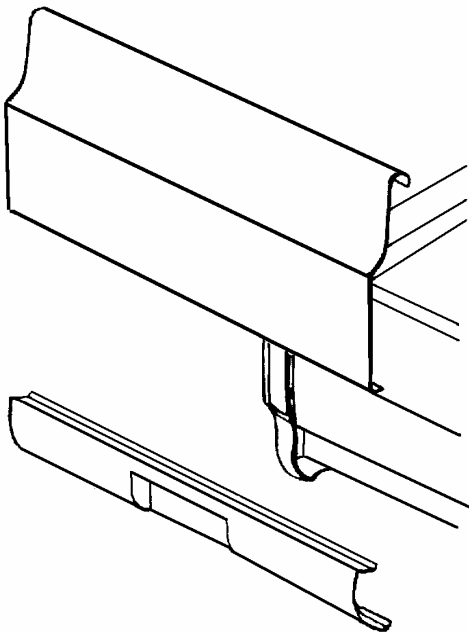
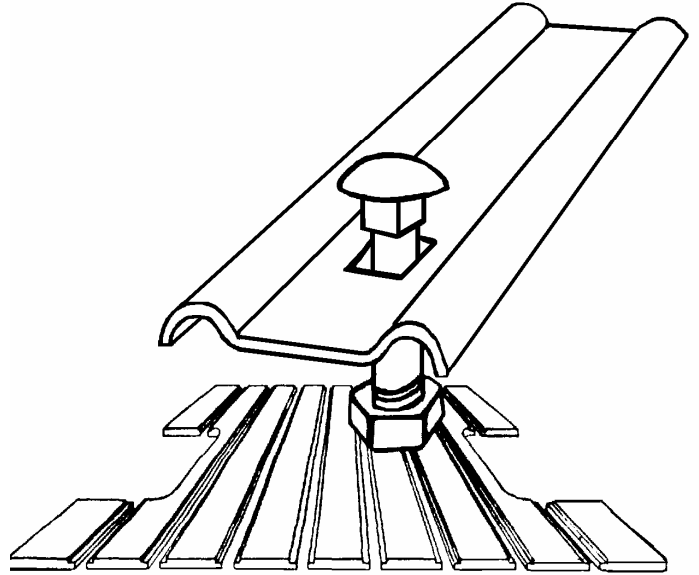


RESTORATION & CUSTOM PICKUP PARTS

BED STRIPS

BED WOOD

- Bed Sides
- Tailgates
- Cross Sills
- Rear Sills
- Hardware
- Front Bed Panels



REAR PANS FRONT PANS TAILGATE COVERS HANDLE KITS

- Weld on or bolt on panels
- Complete instructions included
- 18 Gage steel
- Smooth or Louvres

**** PARTS AVAILABLE VARY EACH STYLE – CALL FOR MORE INFO****