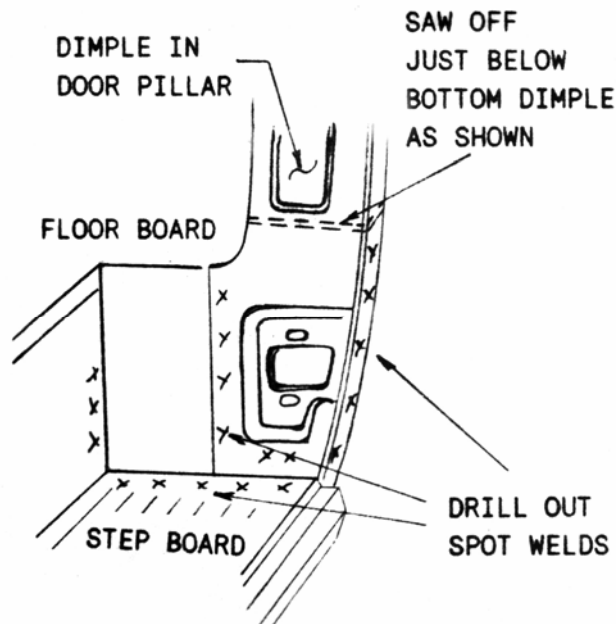


LOWER DOOR HINGE REPLACEMENT PANEL / 55-2ND-59 CHEVY CABS SUGGESTED INSTALLATION INSTRUCTIONS

1. Remove the front fender, door, and lower door hinge.
2. Remove the portion of the door pillar which is to be replaced. The spot welds at 2 sides and the bottom must be drilled out then the panel sawed out above the hinge.

It may be necessary to drill several welds from the step board to provide clearance for removing the part. Other welds into the pocket behind the hinge panel may also have to be drilled to remove the panel.



3. Trim the new replacement panel at the top to match the sawed section of the pillar.
4. This is the time to perform any repair needed in the hinge pocket behind the door hinge or other sheet metal attached to the replacement panel.
5. Position the replacement panel into the area to be replaced and verify the fit is correct. The lower flange of the repair panel must slide under the end of the step board. A slight space about 1/32" to 1/16" should be left between the top of the repair panel and the sawed bottom of the door pillar section. This gap will be filled by welding. The part is positioned correctly when the outer flange is under the mating cowl flange and the radiused flange at the floorboard aligns with both the floorboard and inner edge of the door pillar.
6. Tack weld the repair panel in place and verify it is ready to be permanently installed.
7. Weld each of the spot welds which were drilled out in step 3 above. Always clamp the two parts together adjacent to the weld to insure proper fit.
8. Weld the seam across the pillar and cowl flange along the top of the replacement panel.
9. Weld the hinge pocket to the replacement panel from the backside.
10. Grind all welds smooth to blend with old surface and prepare for painting.

©Copyright 1997 MAR-K Specialized Mfg. All rights reserved.

Another Outstanding Part Manufactured in Oklahoma City, USA by

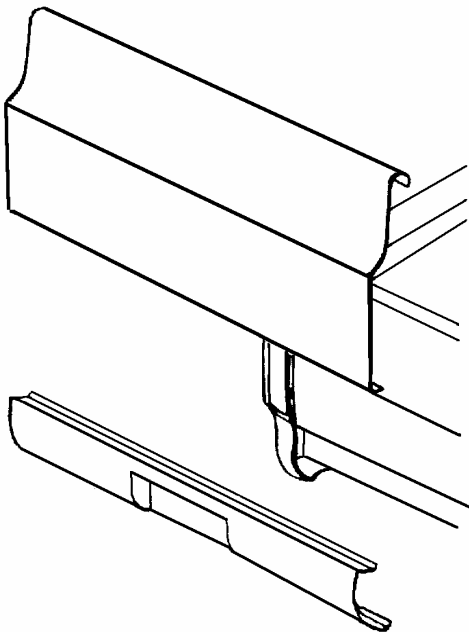
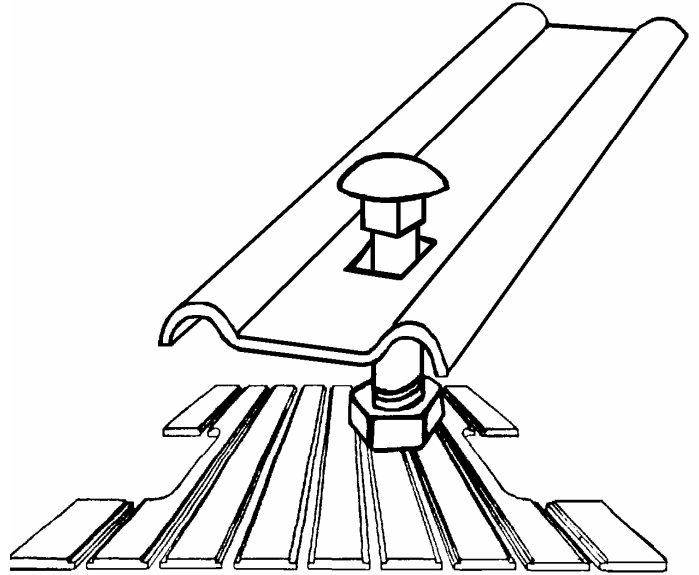


RESTORATION & CUSTOM PICKUP PARTS

BED STRIPS

BED WOOD

- Bed Sides
- Tailgates
- Cross Sills
- Rear Sills
- Hardware
- Front Bed Panels



REAR PANS FRONT PANS TAILGATE COVERS HANDLE KITS

- Weld on or bolt on panels
- Complete instructions included
- 18 Gage steel
- Smooth or Louvres

**** PARTS AVAILABLE VARY EACH STYLE – CALL FOR MORE INFO****