

**34-36 CHEVY STEPSIDE**  
**BED MOUNTING BLOCK & PADS**

**INSTALLATION GUIDELINES**

- A) CONTENTS: Short Step: 4 small blocks with offset holes, 4 rubber pads
- B) There are two large metal brackets that bolt to the front face of the rear cross sill with (2) 5/16-18 x 3/4" bolts. (These brackets and hardware are not included in block and pad kit). They are interchangeable from left to right side. These brackets install with the open side of the bracket facing the centerline of the frame. They fit against the bottom of the wood boards and rest on the frame. The bolts holding this bracket to the frame only pass through the bottom of the bracket and not through the wood.
- C) The small blocks with offset holes are installed at cross sill #3 (third back from the front bed panel) and the front cross sill #1. The order of attachment is: Bed-to-frame bolt, bed-to-frame washer, bed wood, cross sill, cross sill bracket-offset hole, offset hole bed mounting block, bed mounting pad, frame, flat washer, lock washer, and nut.
- D) The second cross sill back from the front bed panel does not bolt to the frame of the truck. It is not required to use a cross sill bracket or wood block in this location.

---

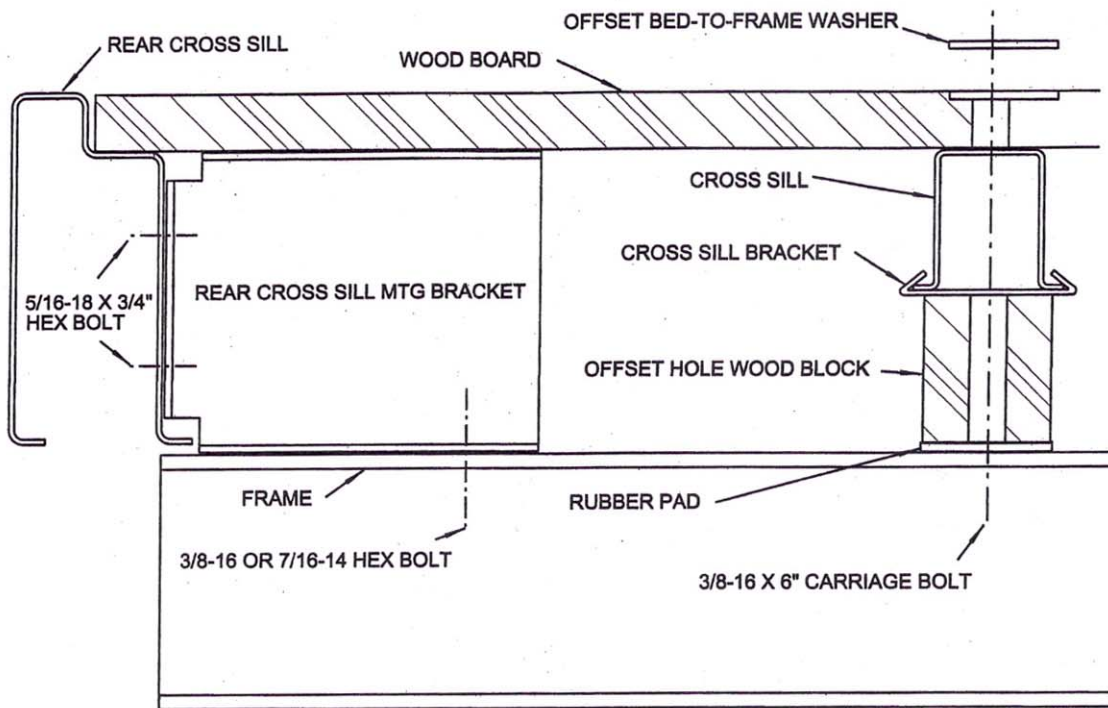
© Copyright 2009, all rights reserved

**34-36 CHEVY STEPSIDE**  
**BED MOUNTING BLOCK & PADS**

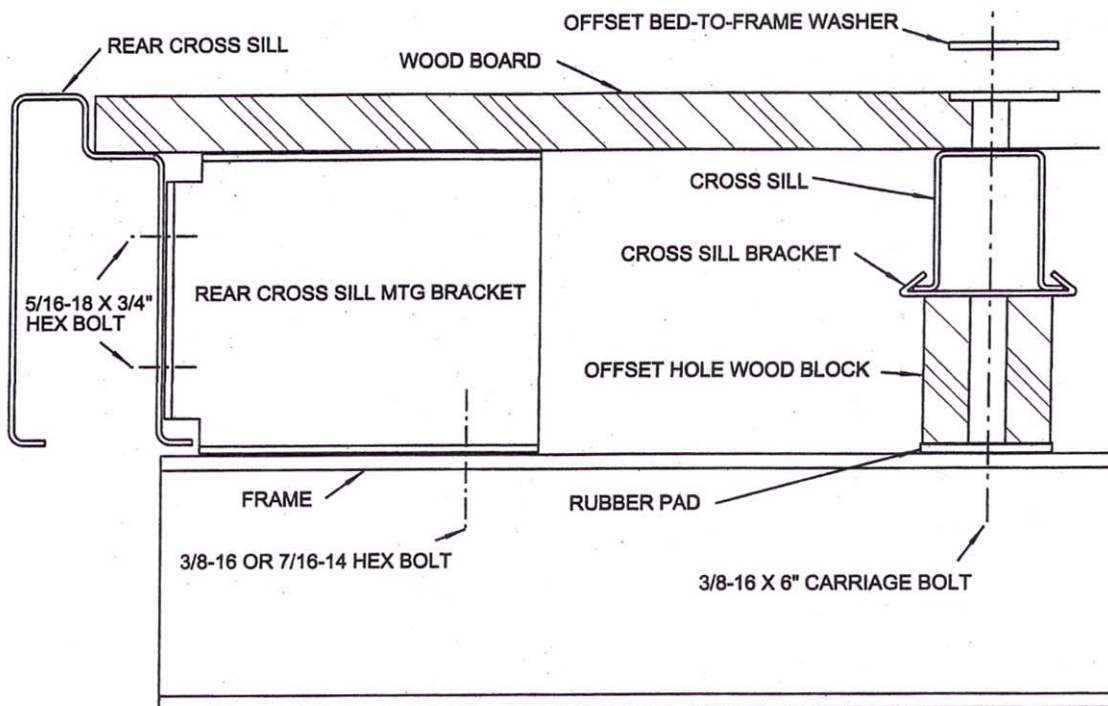
**INSTALLATION GUIDELINES**

- A) CONTENTS: Short Step: 4 small blocks with offset holes, 4 rubber pads
- B) There are two large metal brackets that bolt to the front face of the rear cross sill with (2) 5/16-18 x 3/4" bolts. (These brackets and hardware are not included in block and pad kit). They are interchangeable from left to right side. These brackets install with the open side of the bracket facing the centerline of the frame. They fit against the bottom of the wood boards and rest on the frame. The bolts holding this bracket to the frame only pass through the bottom of the bracket and not through the wood.
- C) The small blocks with offset holes are installed at cross sill #3 ( third back from the front bed panel ) and the front cross sill #1. The order of attachment is: Bed-to-frame bolt, bed-to-frame washer, bed wood, cross sill, cross sill bracket-offset hole, offset hole bed mounting block, bed mounting pad, frame, flat washer, lock washer, and nut.
- D) The second cross sill back from the front bed panel does not bolt to the frame of the truck. It is not required to use a cross sill bracket or wood block in this location.

© Copyright 2009, all rights reserved



34-36 BED MOUNTING DIAGRAM



34-36 BED MOUNTING DIAGRAM