

1976-87 FORD FLARESIDE FRONT CROSS SILL WOOD SUPPORT BLOCKS

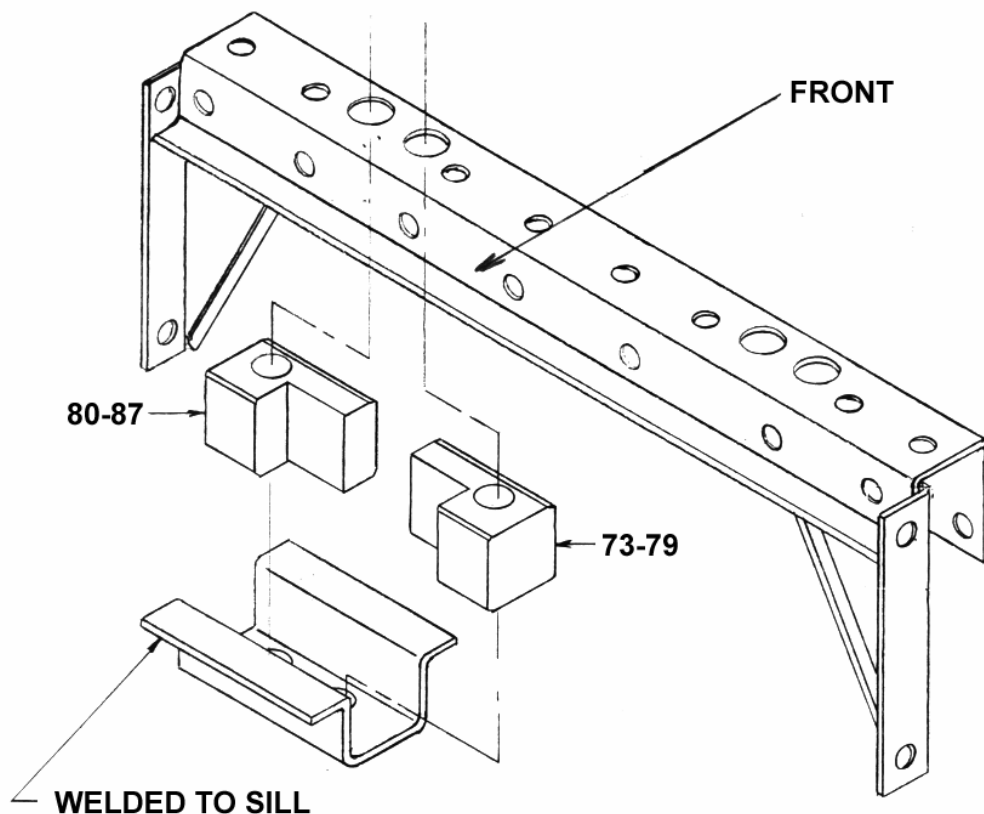
Suggested Installation Instructions:

1. The wood block fits between the cross sill and the bracket.
2. The cross sill and bracket have two **5/8"** holes punched into them. The wood block has one large hole that can line up to either of the holes in the cross sill.

76-87 The bed- to- frame hole spacing is **33"**. The wood block holes must be line up with the inner pair of holes in the cross sill.

80-87 The bed-to-frame hole spacing is **35"**. The wood block holes must be lined up with the outer pair of holes in the cross sill.

3. The wood block has a cut out area that is to face the front of the bed assembly. This area is cut out so that the bolt and nut that attach the front panel to the cross sill will not interfere with the placement of the block.
4. The cross sill or bracket has a small hole that allows a small wood screw to hold the block in place. Drill a **1/8"** hole in the wood block. Attach with the wood screw provided.



©Copyright 1997 MAR-K Specialized Mfg. All rights reserved.

Another Outstanding Part Manufactured in Oklahoma City, USA by

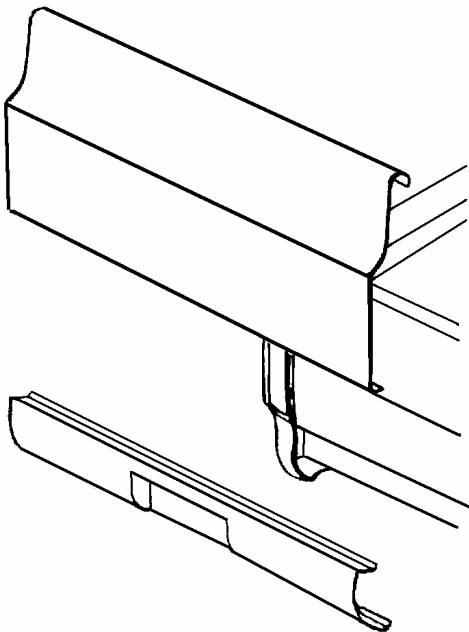
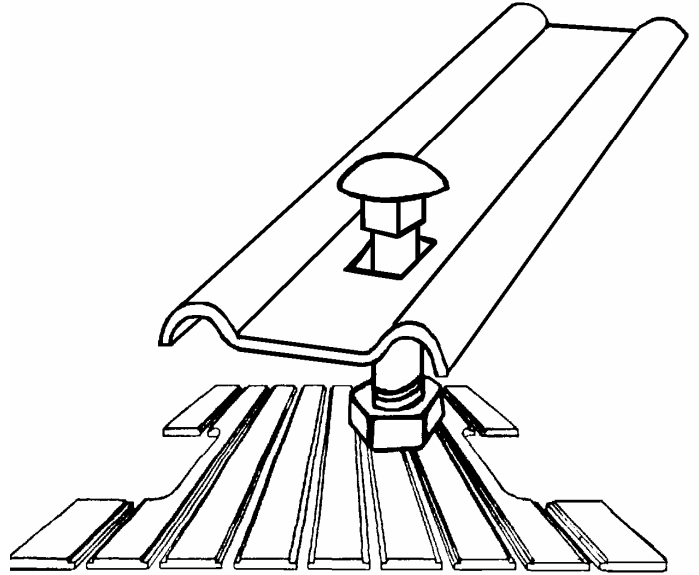
MAR-K
RESTORATION AND CUSTOM PICKUP PARTS

RESTORATION & CUSTOM PICKUP PARTS

BED STRIPS

BED WOOD

- Bed Sides
- Tailgates
- Cross Sills
- Rear Sills
- Hardware
- Front Bed Panels



REAR PANS FRONT PANS TAILGATE COVERS HANDLE KITS

- Weld on or bolt on panels
- Complete instructions included
- 18 Gage steel
- Smooth or Louvres

**** PARTS AVAILABLE VARY EACH STYLE – CALL FOR MORE INFO****